

4D gravity modeling: Integrating seismic data with highly constrained gravity inversions for effective reservoir monitoring

Richard A. Krahenbuhl* and Yaoguo Li,

Center for Gravity, Electrical & Magnetic Studies (CGEM); Colorado School of Mines

Copyright 2011, SBGf - Sociedade Brasileira de Geofísica

This paper was prepared for presentation during the 12th International Congress of the Brazilian Geophysical Society held in Rio de Janeiro, Brazil, August 15-18, 2011.

Contents of this paper were reviewed by the Technical Committee of the 12th International Congress of the Brazilian Geophysical Society and do not necessarily represent any position of the SBGf, its officers or members. Electronic reproduction or storage of any part of this paper for commercial purposes without the written consent of the Brazilian Geophysical Society is prohibited.

Abstract

We demonstrate a robust workflow for time-lapse gravity modeling in reservoir sequestration/production monitoring applications. This systematic approach outlines a reliable methodology to understanding the value and limitations of 4D gravity at a particular site, for both pre-acquisition decision making, and as a guide for post-data acquisition interpretation. To demonstrate, we present a multifaceted feasibility study for monitoring CO₂ injection into a reservoir at various injection times using 4D micro-gravity method. The simulations are performed for a currently active CO₂-EOR site, the Louisiana Delhi Field in the United State. We construct an accurate representation of the field directly from current seismic data, followed by application of binary inversion technology adapted to the time-lapse gravity problem and tailored to the specific site. Finally, we illustrate a method of resolution analysis to demonstrate the decreased recoverability of fluid movement at the site in the presence of varying data noise.

Introduction

Gravity technology is continuously advancing towards cheaper and more accurate sensors capable of monitoring subtle time varying density changes during production and injection. As these technologies, along with survey design analysis and inversion algorithms continue to evolve, 4D micro-gravity proves increasingly viable as an additional tool for effective reservoir management. The method has become an effective, yet relatively cheap means of filling the gap of knowledge in-between the more costly 4D seismic surveys during injection/production stages, and over the longer term for monitoring final CO₂ storage.

We demonstrate a series of necessary procedures for conducting an effective feasibility study of CO₂ flood monitoring in 3D with time-lapse micro-gravity.

The procedures we present for this feasibility study include:

- 1) Constructing a realistic 3D reservoir model from seismic and well data.
- 2) Generating a sequence of fluid contact movement scenarios based on planned injection patterns.
- 3) Analyzing data amplitudes over time to estimate when anomalies can be measured above the noise threshold.
- 4) Identifying appropriate inversion algorithms for the time-lapse problem based on available prior information.
- 5) Inverting the time-lapse data under varying noise levels to understand limitations of 4D gravity at the site.
- 6) Performing survey design analysis to reduce costs.

To illustrate the importance of the proposed methodology, we simulate density change from CO₂ injection over time at the Delhi Field, LA. We utilize relevant parameters for the reservoir as currently available, such as geometry, thickness, depth and porosity. We show that the time change in density contrast from CO₂ injection may be successfully recovered in certain regions and times, and depending largely on the level of noise contained within the data.

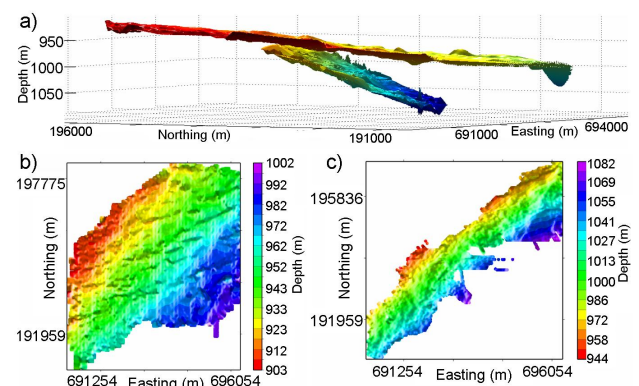


Figure 1: Seismic surfaces utilized to construct the Delhi time-lapse models. The upper surface, also shown in b) is the Clayton chalk, and the lower layer c) is the Paluxy sands. Seismic data were provided by the Reservoir Characterization Project (RCP) at Colorado School of Mines.

Methodology and Demonstration

The value of the Delhi Field as a demonstration site for this methodology is that the surface data straddle a noise threshold for 4D gravity interpretation. Therefore, if a pre-

data feasibility study is poorly constructed here, the results will naturally lean towards one of two incomplete conclusions at this particular site....4D gravity will either work or it won't, depending on the modeling approach. In contrast, we present a robust study of the Delhi Field that combines realistic reservoir modeling, beginning with available seismic data, and utilizing a gravity inversion algorithm adapted to the 4D problem and tailored to the specific reservoir site. Following this systematic approach, we demonstrate that the thicker down-dip volumes of this field might be monitored effectively with 4D surface gravity, but the thinner up-dip sequences of the field will be clearly unrecoverable with surface data alone.

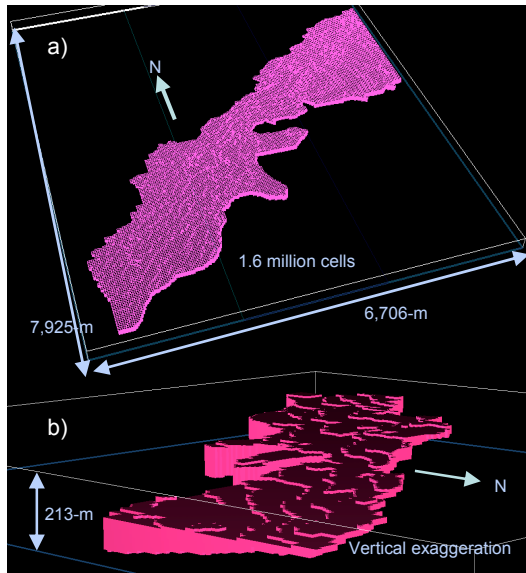


Figure 2: Reservoir model constructed from seismic and well data. Panel a) is a top view, and b) is a side view of the model from the east. The reservoir model is thin to the north, and thickens in down-dip direction to the south.

1. Model construction

We first construct the 3D reservoir model from seismic data defining the boundaries of the system. Geology of the site is available in Bloomer (1946). We use seismic data provided by the Reservoir Characterization Project (RCP) at Colorado School of Mines, with recommendation to define the upper model region by the Clayton clay formation, and the lower region by the Paluxy sands (Bloomer, 1946). Presently, seismic data for these boundaries are at an early stage of processing and interpretation for the field, and they have been provided in time. We have converted these early seismic data to depth by interpolating surface depths from well data across the individual layers. The data we use to bound the model geometry of the simulated Delhi Field are presented in Figure 1. To construct the model, we convert the region into a mesh with 1.6 million cuboidal cells of constant value. The constructed model in Figure 2 nicely reproduces the Delhi Field geometry given the available seismic data for the site.

2. Time-lapse simulations with planned injector locations

In the second component of the feasibility study, we generate a sequence of time-lapse simulations to reproduce CO₂ expansion around known injector wells. Reservoir engineering simulations can greatly improve available time-sequence distributions of CO₂ movement. With the limited injection information currently available at this stage of the study, our simulations expand the CO₂ front symmetrically around the injector wells, keeping within the formation bounds defined by seismic data. The sequences of CO₂ injection are presented in Figure 3 and they span from early time with a 76m radius around the six injectors to a late point where the majority of the north-eastern portion of the field is fully produced.

To calculate the gravity response, we incorporate into the model a density contrast of -0.06 g/cm³ based on average porosity and fluid densities at the site. This density amplitude is consistent with other injection/production sites monitored or modeled with time-lapse gravity method, such as the well studied Prudhoe Bay site (Hare *et al.*, [1999, 2008]; Ferguson *et al.*, 2007, Davis *et al.*, 2008), and the Norwegian North Sea Jotun Field (Krahenbuhl and Li, 2008). The density value here assumes piston-like sweep with full replacement of oil and water by injected CO₂. When 3D distributions of porosity and saturation become available, they can be easily incorporated into the modeling sequences presented in Figure 3 for improved density information. At early stage feasibility studies, it is often the case that we must simplify density information as we have done here.

3. Gravity anomaly amplitudes

We next calculate the predicted surface micro-gravity response from the time sequence of CO₂ injection simulations illustrated in Figure 3. The data are not illustrated here for brevity; however, Table 1 summarizes the amplitudes of the surface response for analysis. In practice, a realistic expectation – or at least assumption – of noise contamination in surface micro-gravity surveys is 5.0-μGal. We therefore assume that data collections, with the exception of base-line measurements, are not required or desired until the predicted response is above that noise threshold.

Table 1: 4D gravity response versus radius of CO₂ front

Radius (m)	76	152	229	305	457	610	762
g _z (μGal)	1	3	8	15	26	31	37

With currently available parameters for this study, we identify that the CO₂ front should expand to a radius of at least 230 meters before any level of detection is possible. With real-world expectation that piston-like sweep and full fluid substitution is not likely, this distance should be treated as a minimum. Improved reservoir simulations if 3D porosity and saturation information become available will naturally refine this component of the feasibility study.

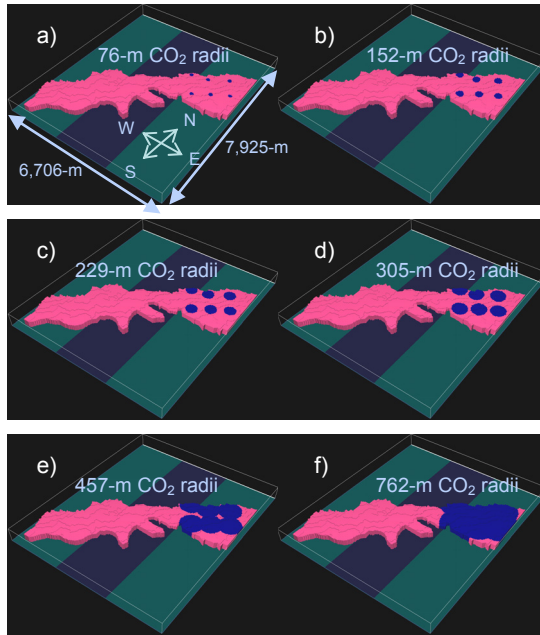


Figure 3: Time-lapse models to simulate gravity response as CO₂ is injected at six locations at Delhi. The panels show expansion of the CO₂ fronts out to radii of: a) 76m , b) 152m, c) 229m, d) 305m, e) 457m, and f) 762m.

4. Identifying an inversion algorithm appropriate for the site's time-lapse problem

Two inversion approaches are well suited for the time-lapse gravity problem in this study. Both utilize density information appropriate to CO₂ injection and seek to resolve shape information or distribution of the anomalous region (swept zones). The first is surface inversions. These methods will assume a simple topology for the boundaries of the reservoir and known density contrast and construct the interface between the CO₂ front and oil/water. Examples of these approaches for lithologic problems include Cheng (2003) and Jorgensen and Kisabeth (2000). The methods have the advantage that they may directly input the known density contrast due to injection and provide a direct image of the CO₂-oil/water contact.

A second approach is to implement a highly constrained generalized inversion method, such as the formulation of Silva Dias *et al.* (2008), the compact growing body technique of Camacho *et al.* (2000), or the binary formulation of Krahenbuhl and Li (2006, 2009). For the CO₂ problem we designed here, these methods would enable one to incorporate density contrast values appropriate to the time-lapse problem, similar to the surface-based inversion, while retaining the flexibility and linearity of cell based density inversions.

To demonstrate one of these current algorithms for time-lapse gravity interpretation, we naturally recover information on fluid contact movement as the CO₂ front expands by inverting the surface gravity data using the binary approach. When implemented for Delhi Field

simulations, the swept regions take values of 1, indicating change in density from fluid replacement, while non-swept zones will take on values of 0, identifying the unswept volumes and background geology. An additional benefit of such an algorithm is that it can be tailored to the specific reservoir site. The method can directly incorporate varying 3D density distributions from reservoir engineering models when available. The formulation likewise allows for the seamless transfer of surfaces from seismic method into the gravity inversion algorithm for a fully integrated monitoring effort. Finally, with a recursive implementation of the technique, as demonstrated in the following section, we can gain valuable understanding into the level of resolution we can expect for the expanding fluid boundaries due to varying data noise. For additional information on binary inversion, the reader is referred to Krahenbuhl and Li (2006, 2009).

5. Understanding recoverability of CO₂ front through robust inversion in the presence of noise

- *Early injection time:* We first implement binary inversion with gravity data from an early stage of CO₂ injection. The radius of CO₂ movement from injectors is 305-m as illustrated in Figure 3d. We invert the data with varying degrees of noise to identify realistic expectations of recovery when inverting time-lapse gravity data at this site. We allow the binary algorithm to invert each data-set at least ten times, each with random starting models and search directions (Krahenbuhl and Li, 2006). The results of these separate inversions are then presented as an average of the parameter distributions to highlight which model features are consistent throughout the multiple binary solutions (features required to fit the data) and those structures which are poorly resolved. The results are illustrated in Figure 4.

The results illustrate near-perfect recovery of the expanding CO₂ fronts throughout the reservoir when minimal noise (1- μ Gal) is present in the data (Figure 4b). We note that the true model was not supplied to the inversion algorithm as either a reference or starting model (Li and Oldenburg, 1998). The prior information incorporated into the process is limited to the bounding seismic surfaces in Figure 2, and the allowable density contrast function, a constant -0.06 g/cm³ throughout the 3D model region for this early study. Each of the final inverse solutions contributing to the mean in panel b) contains sharp boundaries with consistent spatial locations around the six injector wells. The mean of the ten binary results is therefore identical to the true model (Figures 3d and 4a). Such a result is expected for a well formulated algorithm applied to observation data with minimal noise.

Surface gravity data with 1- μ Gal noise allows us to tune the inversion algorithm to the project site; however it is an unrealistic expectation for observations in practice. We next focus our attention on recovering fluid movement for the same dynamic model as data noise increases to realistic levels. As noise in the data is increased incrementally from 1- μ Gal to 5- μ Gal, inversion results in panels c) – f) demonstrate that recoverability of fluid movement significantly decreases within the thinner up-

dip region of the reservoir. We again present results as the mean of at least ten binary inversions for each of the simulations. With 5 μGal noise, a realistic threshold in surface micro-gravity data, very little can be recovered around the northern (up-dip) injectors. Within the thicker layers to the south, the ten binary inversions collaboratively delineate the regions of fluid replacement around the three wells, however there is a noticeable decrease in consistency among the individual solutions resulting from increased data noise. Should data noise at Delhi Field rise above the 5- μGal limit of our simulations, we can expect that the resolution of the recovered models will continue to degrade southward around the lower injector wells at early time.

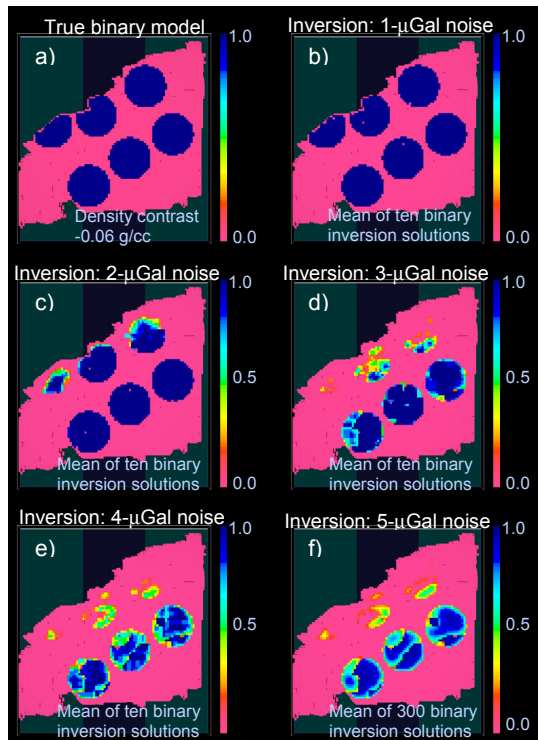


Figure 4: a) True time-lapse model in binary form for the north-east region of the field at early injection time. Panels b) thru e) demonstrate degrading inversion results, particularly in the thinning updip northern region of the reservoir as noise in the data increases.

- *Later injection time:* We next perform ten binary inversions on the data simulated for CO_2 expansion to 762-m. The true model is presented in Figure 3f. The data are contaminated with 5- μGal noise, and the binary inversion results are presented in Figure 5. The results are provided first as an average of the ten inversions in panel (a) to illustrate the features consistent throughout the separate solutions as before. Consistent with the previous inversion results, Figure 5 demonstrates that the bulk distribution of CO_2 movement can be identified within the thicker southern sequences of the reservoir at later times. However, the limited storage capability within the

up-dip section of the reservoir may not provide sufficient information to the surface data (above the noise threshold) to allow for successful monitoring with time-lapse micro-gravity. In panel (b) we present a 3D plot of the variance for each model cell calculated from the ten separate binary inversions. The additional value of this representation is that it provides a basic measure of the spatial resolution we can expect from binary inversion along the edges of the recovered swept zone. For this sequence, the recovered interface can be identified with a spatial variance of approximately 100 meters. Should data noise at Delhi Field rise above the 5- μGal limit of our late-time simulation, we can expect that the variance line separating the northern and southern swept regions of the field (Figure 5b) will continue to migrate southward as resolution decreases, and the width of this interfacing surface will likewise thicken accordingly.

6. Survey design

The final component is identifying optimal survey design parameters prior to field activities. Data collections are often the most expensive component of 4D gravity monitoring efforts, and reducing the number of stations while maintaining resolution is imperative. Survey design, is a separate topic of study in its own right, and there is no agreed upon approach for designing these collections. For example, to investigate a particular depth, one can analyze the decay of the wavenumbers with distance from the source to bound the optimal data spacing in potential field applications (Reid, 1980). In Kirkendall (2007), the author demonstrated a means of analyzing the model resolution matrix as a foundation for designing acquisition parameters based on desired resolution of the recovered inverse model. Davis *et al.* (2008) later performed a similar inversion-based analysis of model feature resolution, guided by the work of Kirkendall (2007), and analyzed as a function of station spacing. They demonstrated that one can identify constant resolution intervals for a wide range of station spacings at a given model discretization. The financial benefits of their findings stem from the fact that a more costly fine survey grid will not necessarily provide better resolution than a significantly cheaper coarse data grid within these intervals. In contrast to these approaches, one may prefer to implement a non-uniform grid design based on predicted injection patterns over time. For example, Hare *et al.* (2008) implemented a radial survey pattern superimposed over a uniform station grid, resulting in higher resolution near the center of the radial grid, and then coarsening outward.

In our demonstration here, we have opted not to indicate survey design preference, but rather focus on the remaining stages that are essential to any high-quality feasibility study. In the current state of this feasibility study, we have simulated surface gravity data collected with a 50-meter uniform station spacing. This is a significant over-sampling in practice, but appropriate for our currently desired understanding of 4D gravity application and limitation as a surface monitoring tool at the Delhi Field.

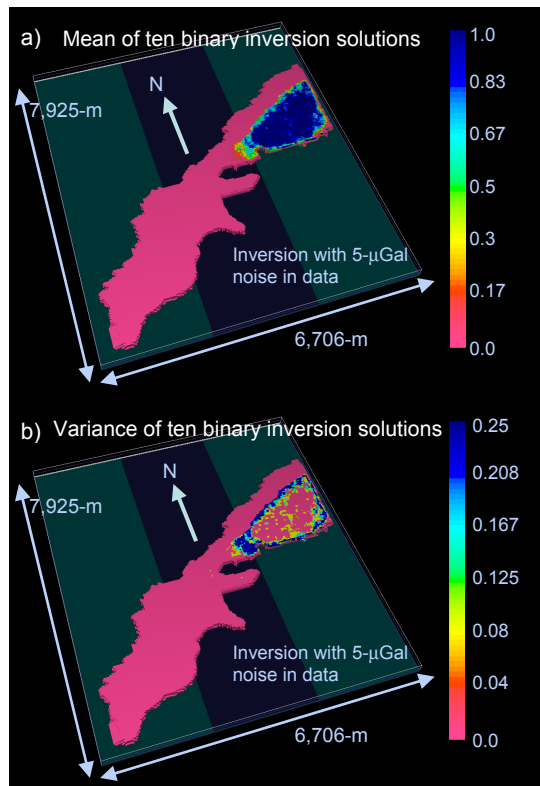


Figure 5: Inversion results presented for the later injection time. The true model is presented in Figure 3f. The results are presented as a 3D distribution of the mean (a) and variance (b) calculated for each parameter from the ten separate binary inversions.

Conclusions

As we continue to witness advancements in gravity technology, ranging from field instrumentation to computer technologies, we are likewise experiencing a rise in the application of 4D gravity method for sequestration and production monitoring efforts. Time-lapse gravity offers an additional set of monitoring information at relatively low cost to these projects in-between and complementary to the more costly seismic efforts. We demonstrate a systematic approach to performing high-quality feasibility studies for monitoring fluid movement over time when the anomalous sources straddle the boundary of detection. The essential components of the methodology begin by incorporating seismic data to generate realistic early-stage reservoir models of the study site. The approach then simulates fluid movement over time and analyzes the response in surface 4D micro-gravity data. Finally, we demonstrate a binary inversion technique adapted to the time-lapse problem and the field site in general, and analyze its effectiveness in the presence of varying data noise.

We demonstrate the approach as a feasibility study for a currently active CO₂ sequestration project at the Delhi Field, LA. The reservoir is relatively thin and deep, resulting in a difficult monitoring endeavor for time-lapse gravity. For the current state of this feasibility study, results demonstrate a strong likelihood of imaging bulk

fluid movement over the life of the project at Delhi, as well as at early stages of CO₂ injection into the thicker southern sequences within the reservoir. In contrast, the study clearly shows that 4D micro-gravity at Delhi will not recover fluid movement within the thinner northern volumes of the reservoir. The boundary separating these two distinct regions is clearly identifiable for current simulations. In practice, however, the heterogeneous distribution of porosity, saturation and fluid pathways within the reservoir, combined with unknown data noise on the surface, may result in a predictable southward migration for this resolution boundary.

The methodology we present here has been demonstrated for surface gravity data. The approach is equally applicable to understanding the added value and limitations of borehole 4D gravity data at a site without modification. It is clear from the current study that surface data alone will not recover CO₂ movement into the northern region of the Delhi Field. Borehole data will need to be collected simultaneously to overcome this noise-limited application of surface data over this region of the field.

Acknowledgments

We gratefully acknowledge the advice continually offered by Guy Flanagan of ConocoPhillips and Marty Terrell of ExxonMobil for advancing our time-lapse gravity modeling and inversion technologies. The expansion of binary inversion to directly integrate seismic and reservoir data would likewise not have been possible without the continuous interactions with Tom Davis and Ibrahim Mustafayev of the Reservoir Characterization Project (RCP) at Colorado School of Mines. They have provided the necessary tools from their Delhi Field sequestration project to allow for a seamless integration of seismic data into our 4D gravity inversion methodology. This work was supported by the industry consortium "Gravity and Magnetics Research Consortium" at the Colorado School of Mines. The sponsoring companies are Vale, Petrobras, Marathon, ConocoPhillips, Anadarko, BGP, Fugro, and BP.

References

- Bloomer, P.A. Jr., 1946, Subsurface study of the Delhi area Franklin and Richland Parishes Louisiana: State of Louisiana Department of Conservation, Geological Pamphlet No.4, Louisiana Geological Survey.
- Camacho, A., F. Montesinos, and R. Vieira, 2000, Gravity inversion by means of growing bodies: *Geophysics*, 65, 95-101.
- Cheng, D., 2003, Inversion of gravity data for base salt: M.S. thesis, Colorado School of Mines
- Davis, K., Kass, M.A., Krahenbuhl, R.A., and Li, Y., 2008, Survey design and model appraisal based on resolution analysis for 4D gravity monitoring: 78th Annual International Meeting, SEG, Expanded Abstracts, 731 – 735.

Ferguson, J.F., T. Chen, J. Brady, C.L.V. Aiken, and J. Seibert, 2007, The 4D microgravity method for water flood surveillance II – Gravity measurements for the Prudhoe Bay reservoir, Alaska: *Geophysics*, 72, 133 – 143.

Hare, J.L., J.F. Ferguson, C.L.V. Aiken, and J.L. Brady, 1999, The 4D microgravity method for water flood surveillance: A model study for the Prudhoe Bay reservoir, Alaska: *Geophysics*, 64, 78 – 87.

Hare, J.L., Ferguson, J.F., and Brady, L., 2008, The 4D microgravity method for waterflood surveillance: Part IV – Modeling and interpretation of early epoch 4D gravity surveys at Prudhoe Bay, Alaska: *Geophysics*, 73, 6, WA173-WA180.

Jorgensen, G. and Kisabeth, J., 2000, Joint 3-D Inversion of gravity, magnetic and tensor gravity fields for imaging salt formations in the deepwater Gulf of Mexico: 70th Annual International Meeting, SEG, Expanded Abstracts.

Kirkendall, B., 2007, Nonlinear model appraisal in gravity gradiometry imaging; properties and modeling of the resolution matrix: Ph.D. thesis, Colorado School of Mines.

Krahenbuhl, R. A., and Y. Li, 2006, Inversion of gravity data using a binary formulation: *Geophysical Journal International*, 167, 543-556.

----2008, Joint inversion of surface and borehole 4D gravity data for continuous characterization of fluid contact movement: 78th Annual International Meeting, SEG, Expanded Abstracts.

----2009, Hybrid optimization for lithologic inversion and time-lapse monitoring using a binary formulation: *Geophysics*, 74, 155– 165.

Li, Y. and Oldenburg, D.W., 1998, 3-D inversion of gravity data, *Geophysics* 63, 109-119

Reid, A. B., 1980, Aeromagnetic survey design: *Geophysics*, 45, 973 – 976.

Silva Dias, F. J. S., V. C. F. Barbosa, and J. B. C. Silva, 2008, Adaptive learning gravity inversion for 3D salt body imaging: 78th Annual International Meeting, SEG, Expanded Abstracts, 746–750.