



Subsurface geometry interpretation by integrating continuous wavelet transform seismic attributes

Marcílio Castro de Matos^{*1,2} and Kurt Marfurt²

¹*Sismo Research&Consulting: www.matos.eng.br, ²The University of Oklahoma: geology.ou.edu/aaspi*

Copyright 2013, SBGf - Sociedade Brasileira de Geofísica

This paper was prepared for presentation during the 13th International Congress of the Brazilian Geophysical Society held in Rio de Janeiro, Brazil, August 26-29, 2013.

Contents of this paper were reviewed by the Technical Committee of the 13th International Congress of the Brazilian Geophysical Society and do not necessarily represent any position of the SBGf, its officers or members. Electronic reproduction or storage of any part of this paper for commercial purposes without the written consent of the Brazilian Geophysical Society is prohibited.

Abstract

Seismic interpretation is highly dependent of the seismic resolution. Sequence stratigraphy, fractures detection, faults interpretation and channels delineation can be improved by using better resolution seismic data. Considering spectral decomposition a way increase seismic traces details, we used complex continuous wavelet transform (CWT) ridges to create a higher resolution traces and the phase discontinuities to detect subtle seismic discontinuities. By integrating these seismic attributes we showed how to improve the understanding of subsurface geometry. The technique was applied to real data and confirmed the effectiveness of the proposed methodology.

Introduction

Signal spectrum has been used since the primordium of the seismic acquisition for different purposes. Random and coherent noise filtering, spectral balancing and seismic wavelet shaping for deconvolution purposes are for instance among Fourier frequency analysis applications.

By using a small time window around the target area, Partyka et al. (1999) showed how spectral decomposition can be used to detect thickness changes and proved to be an important seismic interpretation tool. By using a running window spectral analysis, also called Short-time Fourier transform (STFT), we can extend the spectral analysis to the whole cube, by adding a 4th dimension, frequency, to the 3D seismic cube (Chopra and Marfurt, 2007). Actually, instead of STFT, we can use any other time-frequency decomposition, that converts seismic traces into 2D matrix that expresses how signals vary jointly along time and frequency. This redundant representation carries a lot of information and it is very dependent on the technique chosen. In this work, we use complex Continuous Wavelet Transform (CWT). Using the CWT advantage to detect transients, we used CWT spectral ridges to create a higher time (depth) resolution seismic trace and the phase discontinuities to detect interferences between layers.

We begin our proposition by reviewing complex CWT attributes theory. Then we show how we can improve seismic interpretation by using the proposed methodology to both synthetic and real seismic data.

Method

The CWT is defined as the cross-correlation between the seismic trace and dilated versions of a basic wavelet (Grossman and Morlet, 1984). If the basic wavelet is symmetric the CWT can be taken by convolving the seismic trace with the time-reversed scaled version of the basic wavelet. Knowing convolution in time domain is equivalent to a product in the frequency domain (Oppenheim et al., 1999), CWT can also be interpreted as a band pass filtering or spectral decomposition process.

Therefore, after the CWT computation, each seismic trace is represented by a time (depth) versus scale (frequency band) complex matrix. This represents how well the seismic trace correlates to each dilated wavelet at each instant of time (Matos and Marfurt, 2011).

Mallat and Zhong (1992) showed that the CWT ridges along the scales are associated with signal inflection points and can be used to characterize them. They also showed we can reconstruct a non unique but very good approximation of the seismic trace by using only the CWT ridges, which they called Wavelet Transform Modulus Maxima Line Amplitudes (WTMMLA). Tu and Hwang (2005) later proved that the same concept can be applied using complex basic wavelets. As originally showed by Grossman and Morlet (1984), the complex CWT magnitude represents the average of the dilated wavelets at each instant of time. Consequently, the maximum averages, or the ridges, along the scales (WTMMLA) show the existence of consistent signal transitions.

Borrowing CWT spectral ridges (WTMMLA) ideas from Mallat and Zhong (1984), and Tu and Hwang (2005), geoscientists showed how CWT spectral ridges can be associated with reflectivity series (Hermann and Stark, 2000; Matos et al, 2007; Li and Liner, 2008, Devi and Schwab, 2009).

Matos and Marfurt (2011) showed how to enhance seismic resolution by using complex Morlet CWT spectral ridges and reconstructing the seismic trace using a narrow band wavelet than the one used for analysis. This process is schematically shown in Figure 1.

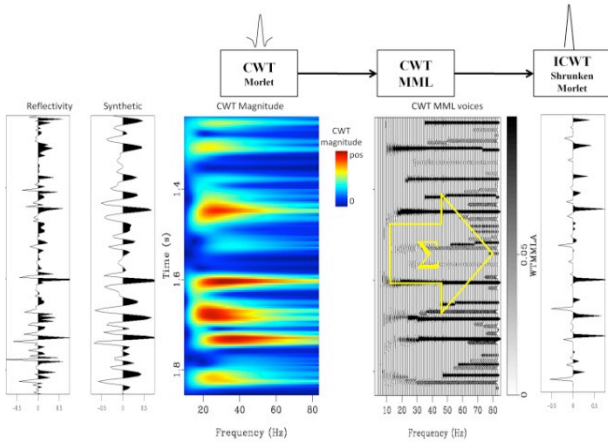


Figure 1: Schematically shows how to compute CWT enhanced resolution seismic trace.

Figure 2 shows a single 2D synthetic seismic response of a channel with thickness varying from 1 to 50 ms and Figure 3a shows the high resolution result. We can clearly see the improvement in the seismic resolution. Figure 3b shows the relative acoustic impedance computed from Figure 3a enhanced resolution trace.

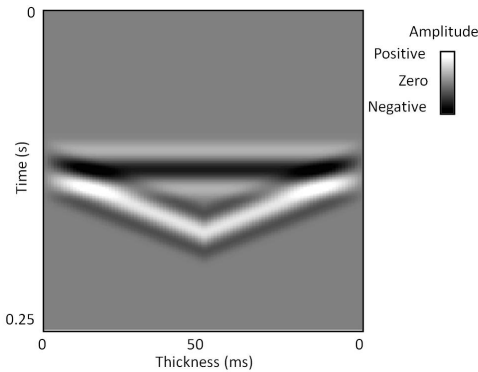


Figure 2: Synthetic channel model.

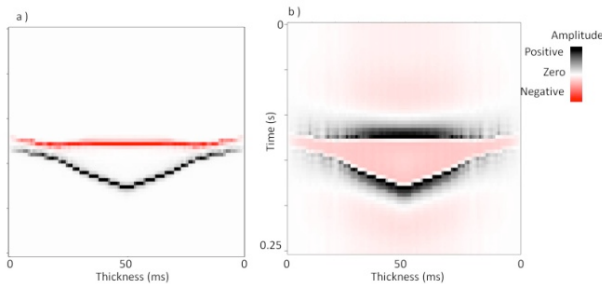


Figure 3: (a) Enhanced seismic resolution obtained by complex CWT and (b) its relative acoustic impedance.

Considering this high resolution seismic representation can be considered a reflectivity approximation, we can also estimate the relative acoustic impedance (RAI) by integrating the high resolution seismic trace (Berteussen

and Ursin, 1983). Actually, the RAI computation consists of three steps:

- 1- Rescale the high resolution trace, by keeping the magnitude much smaller (we suggest 10 times) than one;
- 2 – Integrate the trace by using a special band pass filter (Peacock, 1979);
- 3 – High pass (we suggest 10 Hz) the integrated data.

Despite the complex CWT phase is used to reconstruct the high-resolution trace, it also shows when one shifted and dilated wavelets interfere with each other. This interference or inconsistency is also called as phase residues (Bone, 1991) and Matos et al. (2011) showed how to use them to detect subtle discontinuities. Figure 4 shows that phase residues detected the channel edges when applied to the same Figure 2 wedge model.

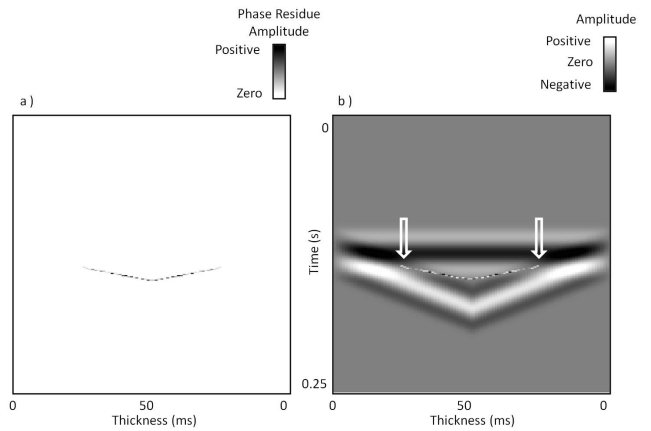


Figure 4: (a) Phase residue amplitude and (b) Seismic channel model corendered with CWT phase residue attribute.

Comparing Figures 3 and 4 we can clearly see how complementary CWT phase residues, high resolution spectral ridges reconstructed trace and relative acoustic impedance are for seismic interpretation purpose.

Example: Stratton field

Let's illustrate the use of such discontinuities by applying them to the well-studied Stratton Field data volume acquired over a south Texas fluvial-deltaic system by the U. Texas Bureau of Economic Geology. Thin channels give rise to tuning effects and subtle amplitude anomalies as shown in Figure 5a. While we can detect the channel system on time and horizon slices, they are difficult to see on vertical slices through the seismic amplitude data (Figure 6a).

Determining the thickness of the channel on the seismic amplitude image is even more difficult. However, after we computed the phase residues of spectral components at 5 Hz intervals, which provides not only an image of waveform interference, but also a measure of our confidence in the interference pattern (provided by the

corresponding spectral magnitude) and the frequency component at which it occurs, we can clearly see from Figure 6b the borders of the channels.

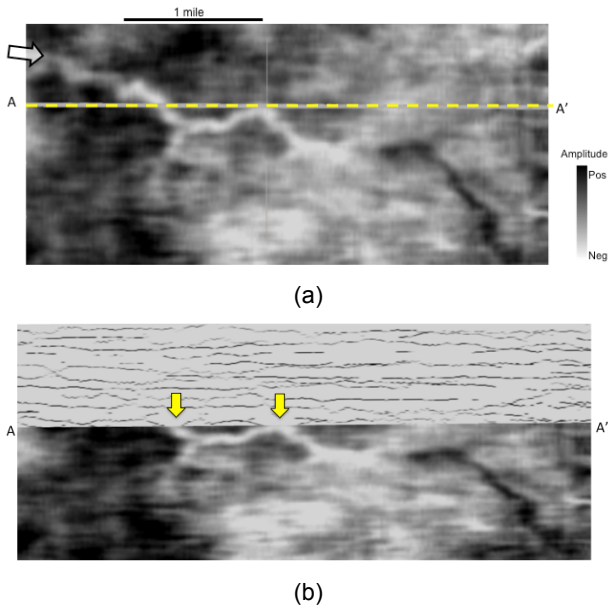


Figure 5: (a) A time slice at $t=842$ ms through a data volume acquired over Stratton field, south Texas. Block arrow indicates a channel that gives rise to an amplitude anomaly. (b) The same time slice co-rendered with a vertical slice through the corresponding spectral phase residue volume. Yellow block arrows indicate how phase residues delineate the channel system very well.

Considering ICWTdec as a reflectivity estimator we can complement our channel analysis by using ICWTdec and RAI attributes, which are illustrated in Figures 6c and 6d. Comparing Figures 6a, 6b, 6c and 6d we can see that phase residue helps to delineate the channel geometry while ICWTdec and RAI support stratigraphy interpretation.

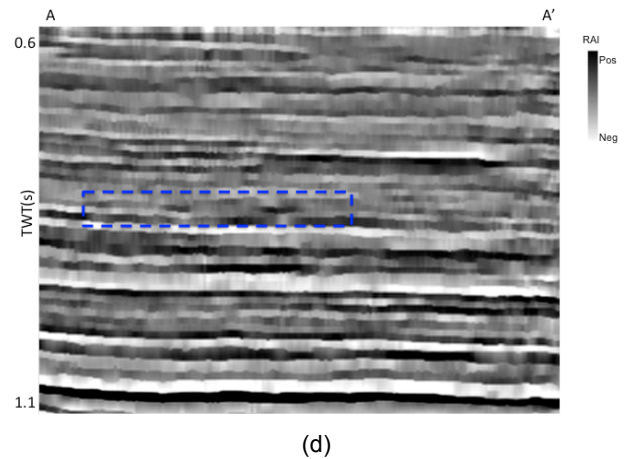
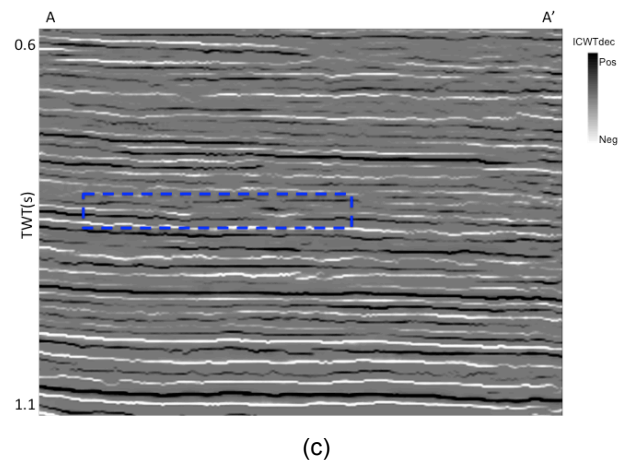
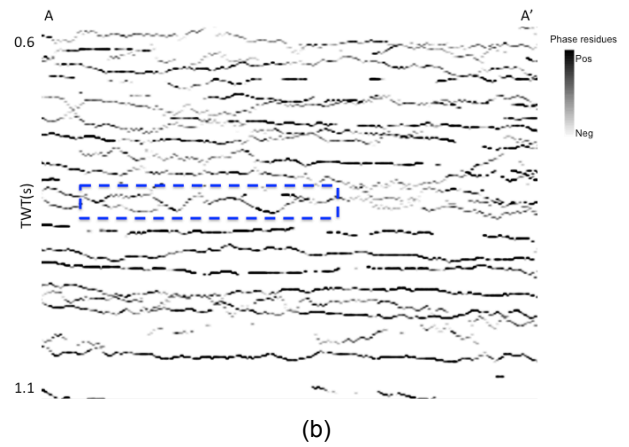
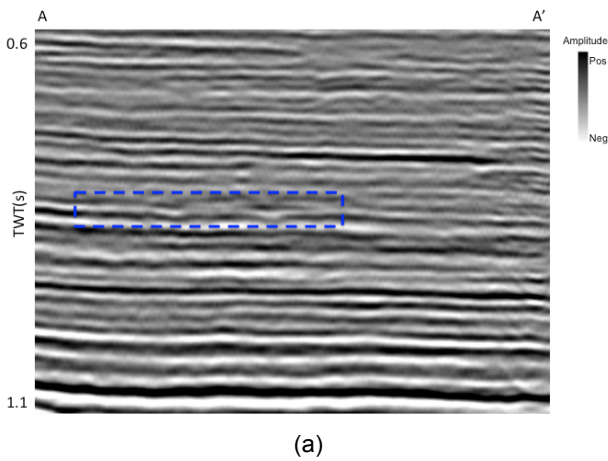


Figure 6: Vertical slices along line AA' shown in the previous image through (a) the seismic amplitude, (b) the phase residue, (c) the ICWTdec and (d) the RAI. Blue dash box indicates the analyzed channel system.

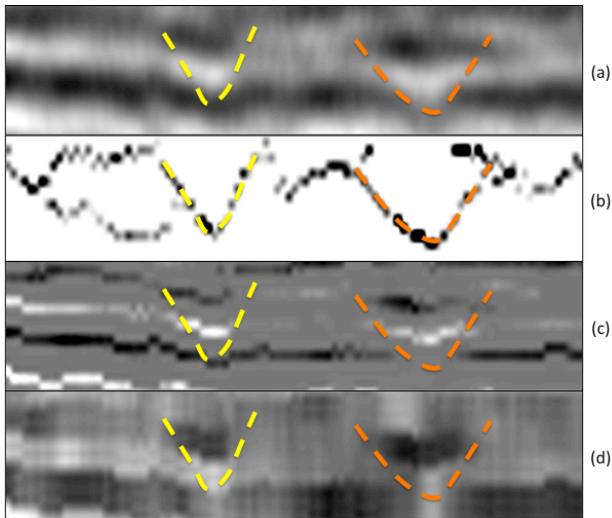


Figure 7: Close-up area on Figure 6 guided by the blue dashed box. (a) Seismic, (b) phase residues, (c) ICWTdec and (d) RAI. Yellow and red dashed lines were picked from phase residues (b).

Using the dashed blue box, Figure 7 shows the close-up area on Figure 6, and reinforces how the integration of CWT seismic attributes helps the channel system interpretation. Considering Figure 7 yellow and red dashed lines as the bottom of the channel system interpreted from phase residue attribute as a guide to our interpretation, we can also see that ICWTdec and RAI help to interpret the local stratigraphy.

Conclusions

We show how CWT attributes can be effectively applied to reveal and enhance important stratigraphic features otherwise not revealed by conventional seismic amplitude. We have developed a workflow that combined seismic amplitude with CWT attributes in order to produce a high frequency seismic stratigraphy framework for seismic interpretation and demonstrate how by combining these attributes detailed seismic stratigraphy sequences can be extracted from the seismic data as an input for detailed reservoir characterization.

Acknowledgments

The authors would like to thank industry sponsors of the University of Oklahoma Attribute-Assisted Seismic Processing and Interpretation (AASPI) Consortium.

References

Berteussen, K.A., and B.Ursin, 1983, Approximate computation of the acoustic impedance from seismic data: *Geophysics*, **48**, 1351-1358.

Bone, D. J., 1991, Fourier fringe analysis: the two-dimensional phase unwrapping problem: *Applied Optics*, **30**, no. 25, 3627–3632, doi:10.1364/AO.30.003627.

Chopra, S., and K. J. Marfurt, 2007, *Seismic Attributes for Prospect Identification and Reservoir Characterization*: SEG.

Devi, K.R.S., and H.Schwab, 2009, High-resolution seismic signals from band-limited data using scaling laws of wavelet transformms: *Geophysics*, **74**, WA143-WA152, doi:10.1190/1.3077622.

Grossmann, A., and J. Morlet, 1984, Decomposition of Hardy functions into square integrable wavelets of constant shape: *SIAM Journal on Mathematical Analysis*, **15**, 723-736, doi:10.1137/0515056.

Herrmann, F., and C. Stark, 2000, A scale attribute for texture in well and seismic data: 70th Annual International Meeting, SEG, Expanded Abstracts, 2063-2066, doi:10.1190/1.1815849.

Li, C., and C. Liner, 2008, Wavelet-based detection of singularities in acoustic impedances from surface seismic reflection data: *Geophysics*, **73**, V1-V9, doi: 10.1190/1.2795396.

Lines, L. R., and T. J. Ulrych, 1977, The old and the new in seismic deconvolution and wavelet estimation: *Geophysical Prospecting*, **25**, 512-540, doi:10.1111/j.1365-2478.1977.tb01185.x.

Mallat, S., and S. Zhong, 1992, Characterization of Signals from Multiscale Edges: *IEEE Transactions on Pattern Analysis and Machine Intelligence*, **14**, 710–732, doi:10.1109/34.142909.

Matos, M. C., P. L. M. Osorio, and P. R. S. Johann, 2007, Unsupervised seismic facies analysis using wavelet transform and self-organizing maps: *Geophysics*, **72**, P9-P21, doi:10.1190/1.2392789.

Matos, M. C., O. Davogusto, K. Zhang, and K. J. Marfurt, 2011, Detecting stratigraphic discontinuities using time-frequency seismic phase residues: *Geophysics*, **76**, no. 2, P1–P10, doi:10.1190/1.3528758.

Matos, M. C., and K. J. Marfurt, 2011, Inverse continuous wavelet transform “Deconvolution”: 81st Annual International Meeting, SEG, Expanded Abstracts, 1861–1865, doi:10.1190/1.3627569.

Partyka, G., J. Gridley, and J. Lopez, 1999, Interpretational applications of spectral decomposition in reservoir characterization: *The Leading Edge*, **18**, 353–360.

Peacock, K.L., 1979, An optimum filter design for discrete integration: *Geophysics*, **44**, 722–729.

Tu, C.L., and W.L. Hwang, 2005, Analysis of singularities from modulus maxima of complex wavelets: *IEEE Transactions on Information Theory*, **51**, 1049-1062, doi: 10.1109/TIT.2004.842706.