



2D Refraction Tomography for Velocity Model Building and Static Corrections

Bruno F. Gonçalves (Petróleo Brasileiro S.A.) and German Garabito (UFRN)

Copyright 2019, SBGf - Sociedade Brasileira de Geofísica

This paper was prepared for presentation during the 16th International Congress of the Brazilian Geophysical Society held in Rio de Janeiro, Brazil, 19-22 August 2019.

Contents of this paper were reviewed by the Technical Committee of the 16th International Congress of the Brazilian Geophysical Society and do not necessarily represent any position of the SBGf, its officers or members. Electronic reproduction or storage of any part of this paper for commercial purposes without the written consent of the Brazilian Geophysical Society is prohibited.

Abstract

The present work applies a methodology for 2D near-surface velocity model building and static corrections for land seismic data using shallow refraction information. A synthetic seismic data was generated and then an initial interpretation, modeling and inversion were performed using a 2D ray tomography algorithm to minimize first arrival traveltimes, inverting both the seismic velocities as the vertical position of the refractor. The results obtained were compared with a linearized refraction tomography algorithm, commonly used in the seismic processing workflow. It was observed that the algorithm obtained the smallest relative errors in most of the parameters of the model.

Introduction

In many onshore exploration areas, the land surface is covered with a relatively thin layer of material of low seismic velocity (commonly called LVL, or low velocity layer). It is generally related to aerated material above the water table or to geologically recent unconsolidated sediments on a substratum of harder consolidated rocks. Variations in the physical properties of this upper layer can cause a dramatic deterioration in the quality of land seismic data. Static corrections are most important in the processing of land data because they lead to improved quality in subsequent processing steps which, in turn, impact the integrity, quality and resolution of the imaged section. There are refraction-based techniques which use the first break information in a deterministic way to estimate the near-surface model from which the static corrections are computed. An approach to the computation of statics is to assume a model, compute the first breaks by ray tracing through the model, and then modify the model in order to minimize the differences between observed and modeled first breaks. Such is the tomographic approach (Marsden, 1993).

Amorim et al., (1987) used a one-layer model in a tomographic approach which they called *numerical equivalent*. This algorithm uses a linear approximation, since there is no ray tracing itself, but an approximation through straight rays. The model is parameterized in vertical prisms (cells) and only inverts the LVL velocity. Among the limitations of the algorithm is not allow the inversion of more than one refractor (can interpret another refractor, but only one LVL and the last refractor is considered), LVL thickness and refractor velocity.

Other approach for calculating static correlations is the *turning-ray tomography*, also known as diving-wave tomography or *tomostatics* (Zhu et al, 1992; Stefani, 1995). This method has advantages in regions where no refractors can be easily identified, have hidden layer or the lack of smooth velocity structure such that conventional refraction statics usually fail due to continuously refracted rays. The method uses a parameterization of the model through a finely uniform grid and does not work with surfaces, only velocity values in the grids. This limitation can make the result highly unstable, being sensitive to picks and initial model.

In order to determine the velocity model and crustal structure, a tomographic inversion algorithm was introduced by Zelt and Ellis (1988) and Zelt and Smith (1992). This algorithm, called Rayinvr, uses an interface model, which forms segmented layers in trapezoids. The velocity values in the vertices are used to interpolate the velocity within each trapezoid, allowing the continuous rays propagation. In this way, the algorithm allows lateral and vertical velocity variation. The computational cost is low because it does not use uniform grid, and the use of interfaces allows flexibility in the construction of the model, since the vertices of the trapezoids do not need regular sampling.

In this work, we use the Rayinvr algorithm in a seismic reflection data for determination of the near-surface velocity model. The estimated velocity model is used for static corrections, removing temporal variations from medium to long wavelengths, caused by variations of topography and LVL. We performed the first tests on synthetic data and presented the preliminary results.

Method

Zelt and Smith (1992) developed a technique for inverting traveltimes to obtain 2D velocity and interface structure simultaneously, in which the model parameterization and method of ray-tracing are suited to the forward step of an inversion algorithm. The method is applicable to any set of traveltimes for which forward modeling is possible, regardless of the shot-receiver geometry or data quality, since the forward step is equivalent to trial-and-error forward modeling. The non-linearity of traveltime inversion makes a starting model and iterative approach necessary, thus requiring a practical and efficient forward step.

The parameterization of the model consists of interfaces of fragmented layers in an irregular network of trapezoids, each with upper and lower boundary layers and vertical sides. The velocities at the four corners of the trapezoid are used to interpolate a velocity field within the trapezoid so that velocity varies linearly along its four sides. Therefore, horizontal and vertical velocity gradients may exist within a trapezoid. The number and position of the model parameters (velocity and interface nodes), which

specify each layer, can be completely general and therefore adapted to the resolution of the subsurface data. The algorithm also allows variations of topography and near-surface velocity to be incorporated into the model.

The method of raytracing is coupled to an automatic determination of ray take-off angles by an efficient numerical solution of the 2D ray-tracing equations. Applying a smooth layer boundary simulation reduces the instability associated with a blocky model parameterization. The first step of the inversion is the analytic calculation of partial derivatives of traveltimes related to the model velocities and the vertical position of boundary nodes. These partial derivatives are calculated during ray-tracing and may correspond to any arrival identified in the observed seismic traveltimes data (i.e., refractions, reflections, head-waves, multiples, etc.). Traveltimes and partial derivatives are interpolated across ray endpoints to the receiver locations, avoiding the need for two-point ray-tracing. Damped least-square inversion is used to determine the updated model parameters of those selected for adjusting both velocities and boundary nodes simultaneously.

The Zelt's algorithm, called Rayinvr, was initially designed to work with wide-angle seismic and crustal modeling, and is largely used in the literature. It has limitations, but with some adaptations and care, it allows work with shallow refractions from seismic reflection data.

Application

We constructed a synthetic model based on topographic and velocity model information from a real seismic line in a Brazilian basin. Figure 1 shows only the shallow part of the model, which is the target zone. In the shallow part the *Low Velocity Layer* (LVL) has velocity of 1500 m/s (called V0), the second layer, referred as a refractor, has velocity of 2500 m/s (called V1) with a depth structure called Z.

The synthetic modeling used a finite difference algorithm with the following acquisition parameters: 101 shots, spaced 80 meters, 200 channels, spaced 20 meters, in a split-spread arrangement. A Ricker pulse with dominant frequency of 20 Hz was used. With the synthetic data, the first breaks picking were carried out then, a methodology was developed to construct the initial model to find V0, V1 and Z.

Initially, the *crossover points* were interpreted for each arm of the synthetic data. From origin of a T-X graph until these points, the slopes (and its inverse, the velocity) were calculated for each separate side spread. The final V0 value in the shot was found using a mean between these two values. To find V1, the principle of reciprocity was applied. Direct and reverse shots were used, then the slopes and velocities of each were calculated (Vd for direct shot and Vr for reverse shot). To overcome the problem of apparent velocities, a corrected velocity Vf was used, based on the following relation $V_f = (2 \cdot V_d \cdot V_r) / (V_d + V_r)$. For each direct and reverse shot Vf was calculated over the stations that cover both spread. Following, a mean of Vf was obtained, finding only one value in the station and calling it V1. With initial V0 and

V1, the thickness Z was found using *Delay time method* (Barry, 1967), constructed in a scheme of linear equations and solved by the least squares method. We used 101 points to define V0, V1 and Z (localized in the shot points).

With the determined initial model (V0, V1 and Z), the modeling and tomography inversion in Rayinvr algorithm was used (the possibility of vertical gradient was not considered). Initially, a smoothing filter was done using a three-point filter, performed five times, for velocities V0 and V1 to remove anomalous values. For the tomographic inversion, the following parameters were used: estimated uncertainty traveltimes pick in 5 ms, model velocity uncertainty of 20 m/s, model boundary position uncertainty of 1 m. The RMS traveltimes residual was 12.56 ms for initial model and 7.96 ms for inverted model. The normalized chi-squared was 6.31 for initial model and 2.53 for the final inverted model.

Finally, we compare the result of Rayinvr algorithm with the Refratom software, owned by Petrobras. This program uses linearized refraction tomography based on the algorithm of Amorim *et al* (1987), as previously described.

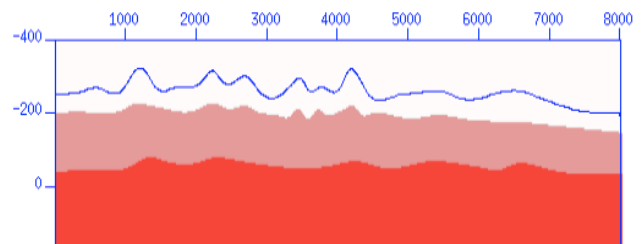


Figure 01: Shallow part of velocity model used to produce synthetic data. Topography is the line in blue. First layer have constant velocity of 1500 m/s (the low velocity layer), second layer 2500 m/s (the refractor reference) and third layer 3000 m/s.

Results

Figure 02 shows, at the top, interfaces of the model with the elevation and depth of the refractor for real model, initial model, inverted by Rayinvr and results from Refratom. The base of figure 01 shows velocity curves of V0 and V1 for initial model, initial smoothed model (used in Rayinvr), inverted by Rayinvr and results from Refratom. Remembering that Rayinvr inverts all three parameters simultaneously (V0, V1 and Z), while Refratom just V0 velocity.

Figure 03 shows the difference between curves of the real model for V0, V1 and Z for the initial model, inverted by Rayinvr and results from Refratom. The result improvement obtained by Rayinvr for the parameter Z is visible in comparison to the initial model and Refratom, mainly in the right part of the model, where was able to resolve the top of the refractor.

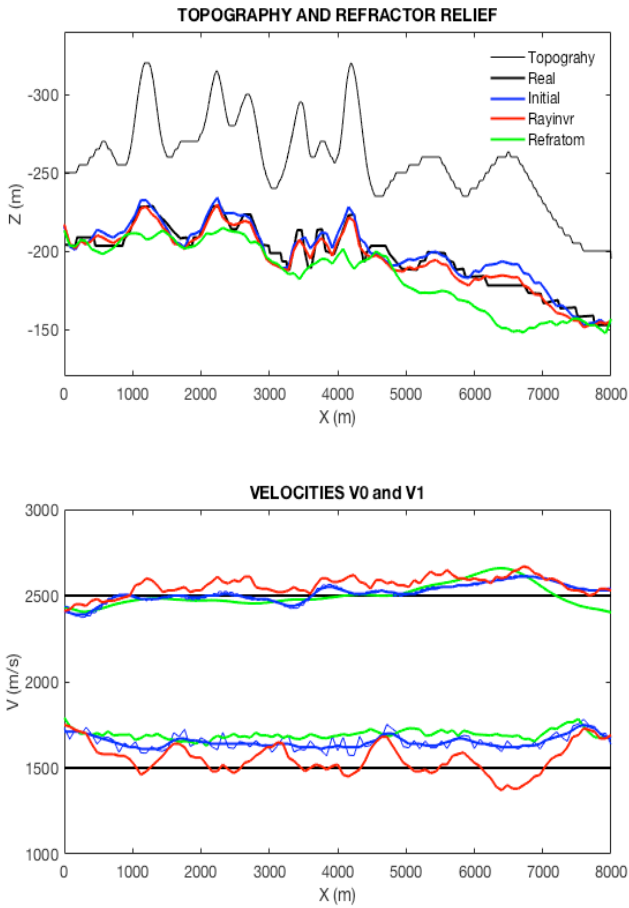


Figure 02: Top: topography and depth of the refractor for real model, initial model, Rayinvr model and Refratom model. Base: velocity curves of V0 and V1 for initial model, initial smoothed model, Rayinvr model and Refratom model.

For the V0 parameter it was also better, but introduced lateral velocity variation, where it has parts that approximate the constant real velocity (1500 m/s) and other parts shifts away. Finally, for velocity V1, Rayinvr ended up getting worse than the initial model.

We also calculated the static corrections for shot points stations considering the final datum at sea level. Figure 04, at the top, shows the results and, at the bottom, the difference to the real model. Apparently, the difference between the two tomography methods is very similar. For the Refratom, it is clear that the larger Z thicknesses were compensated by higher V0 velocity.

We calculate a relative RMS (root mean square) error using the following formula:

$$E(\%) = \left[\frac{\frac{1}{N} \sum_{i=1}^N (a_i - b_i)^2}{\frac{1}{N} \sum_{i=1}^N a_i} \right] \times 100$$

Table 01 gives a summary of relative RMS error for Z, V0, V1 and static corrections for the real model.

Table 01: Summary of relative RMS error.

Parameter	Initial	Rayinvr	Refratom
Z	3.16%	2.32%	7.49%
V0	10.58%	6.85%	13.06%
V1	2.21%	3.19%	2.61%
Statics	4.29%	2.02%	2.21%

We can see that Rayinvr has worse error for parameter V1, but is better for the others. The initial model of V1 has the better one. One limitation is because Rayinvr uses turning rays instead of straight rays for direct waves. Since the model has a constant velocity for the LVL, the algorithm has difficulty in drawing straight rays (because it uses shooting method based on ray-take off angles), which hinders the seismic imaging. The Rayinvr algorithm, originally proposed to solve crustal models, has some limitations for near-surface velocity building. Zelt (1999) suggests the use of minimum independent parameters and use of prior-information to avoid instability. The fewer parameter points you use, the less unstable and the more reliable the result of your inversion. In this work, we use 101 points for each parameter of the model that we inverted (one for each shot station). This can be considered huge, and can result in poor inverted data.

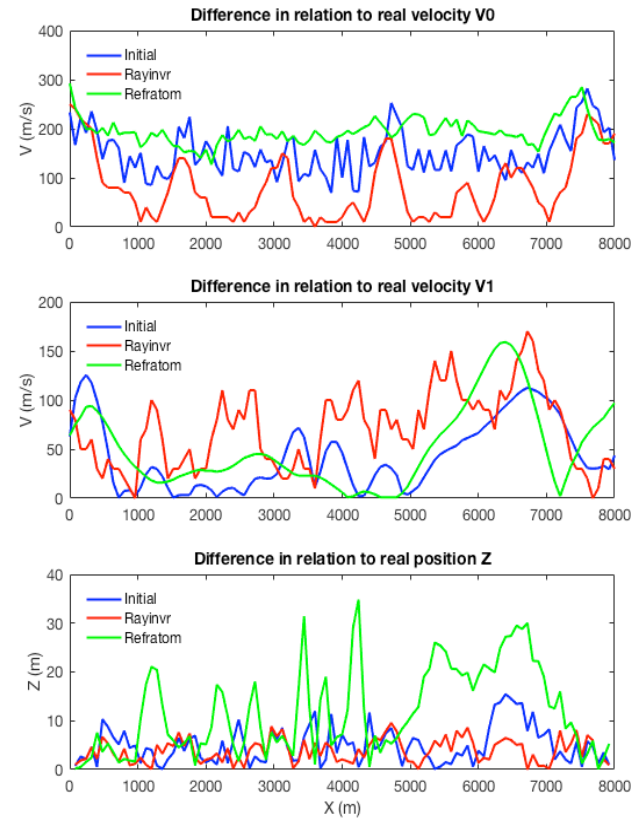


Figure 03: Difference curves with respect to the real model for V0, V1 and Z for the initial model, Rayinvr model and Refratom model.

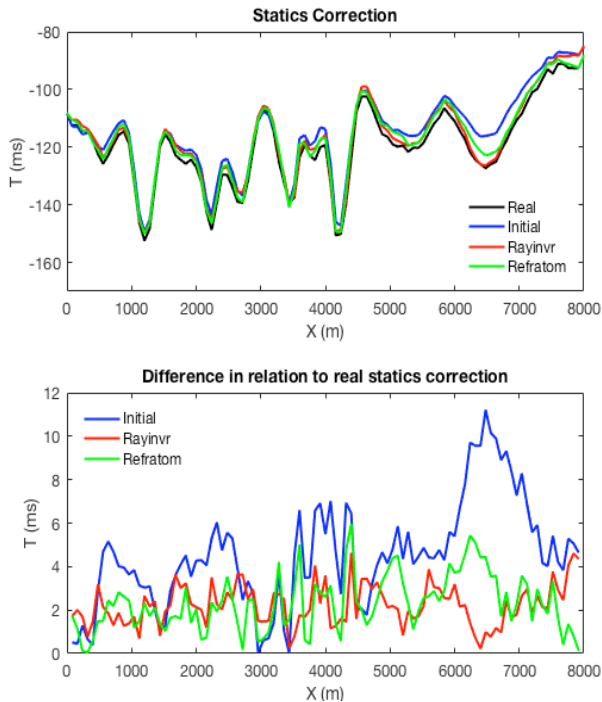


Figure 04: Top: Calculated static corrections for real model, initial model, Rayinvr model and Refratom model (for final datum in sea level). Bottom - difference in relation to the real model.

Conclusions

A 2D seismic tomography algorithm was used to invert simultaneously V_0 , V_1 and Z in a one-layer refraction model. In comparison with real model, the inversion obtained relative errors of 2.32%, 6.85% and 3.19% for V_0 , V_1 and Z , respectively. The result was compared with another method of refraction tomography, and even though the static corrections values from both are similar, it is important to study the impact of this velocity model for seismic depth imaging.

This work is still being developed, and the authors are studying other models and characteristics of each tomography method. In this sense, the authors are still studying the program, testing other models parametrization, use of different values of uncertainties in the picks (data) and in the velocities and boundary positions (model), in an effort to reducing instability.

The authors are rewriting the Rayinvr algorithm and working to improve it. It is expected that with the resulting algorithm it will be possible to construct near-surface velocity models more reliably to geology. In future works, the authors also intend to use others models, like two refractors, vertical velocity changes in the low velocity layer, lateral velocity changes in the refractor, and so on.

Acknowledgments

The main author thanks Petrobras for the support, incentive and authorization to carry out the work.

References

- Amorim, W. N., Hubral, P. and Tygel, M., 1987. Computing field statics with the help of seismic tomography, *Geophysical Prospecting*, 35, 907-919.
- Barry, K. M., 1967. Delay time and its application to refraction profile interpretation, in *Seismic Refraction Prospecting: A. W. Musgrave, Ed., S.E. G., Tulsa*, p. 348-361.
- Marsden, D., 1993. Static corrections – a review - Part I, *The Leading Edge*, January 43-49.
- Marsden, D., 1993. Static corrections – a review - Part II, *The Leading Edge*, February, 115-120.
- Stefani, J.P., 1995; Turning-ray tomography, *Geophysics* 60, 1917-1929.
- Zelt, C. A. and Ellis, R. M., 1988. Practical and efficient ray tracing in two-dimensional media for rapid traveltimes and amplitude forward modelling, *Can. J. expl. Geophys.*, 24, 16-31.
- Zelt, C. A., and Smith, R. B., 1992. Seismic traveltimes inversion for 2-D crustal velocity structure, *Geophys. J. Int.*, 108, 16-34.
- Zelt, C. A., 1999. Modelling strategies and model assessment for wide-angle seismic traveltimes data. *Geophys. J. Int.*, 139, 183–204.
- Zhu, X., Sixta, D. P., Angstman, B. G., 1992; Tomostatics: Tuning-ray Tomography + Static Corrections, *The Leading Edge* 11, no. 12, 15-23.